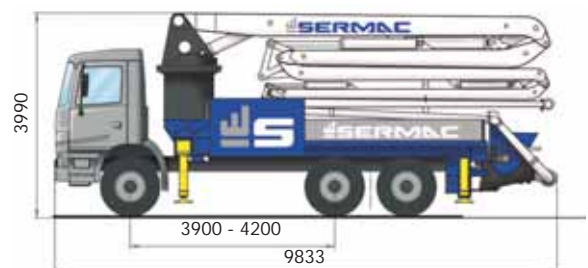
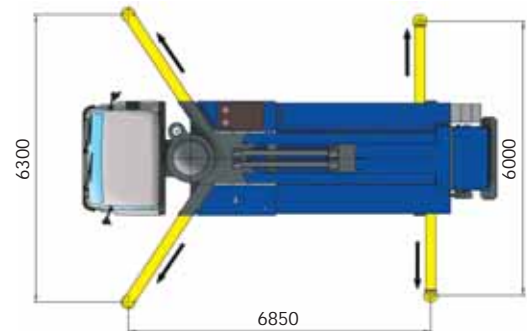
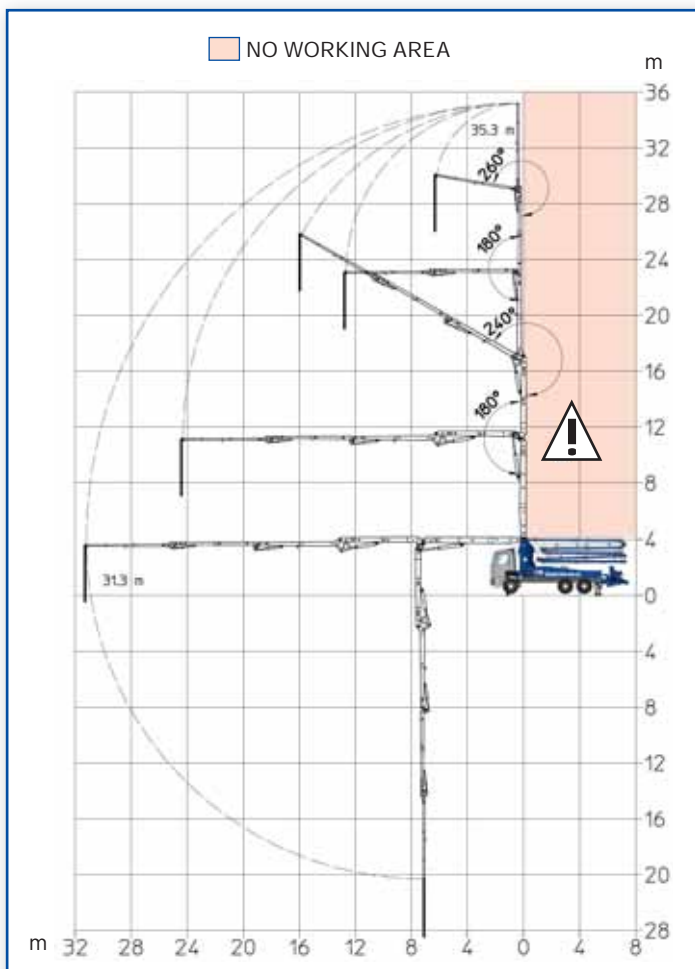




ADVANTAGES

- Concrete pump created by - R&D SERMAC DESIGN - to reach maximum performance.
- Concrete pump made, assembled and tested in Italy (Milan).
- High precision and great versatility of movement thanks to boom 5Z36.
- Italian and German main components, Swedish steel.
- Frame pump designed for high torsion rigidity with outriggers integrated.
- Optimal loads distribution, precise assembly on standard 3 axles chassis.
- Compact equipment, total weight 26 tons (57320 lb).
- Placement fast, easy and in tight spaces.



*Dimension varying according to the truck assembly

PUMPING UNIT specification

MODEL	SCL130A	SCL150AHP	SCL185A
TH. CONCRETE OUTPUT (MAX.)*	130 m ³ /h (170 cy/h)	149 m ³ /h (195 cy/h)	184 m ³ /h (214 cy/h)
TH. CONCRETE OUTPUT (MAX.)*	61 bar 884 p.s.i.	76 bar 1102 p.s.i.	61 bar 884 p.s.i.
PUMPING CYLINDERS (Ø X STROKE) MM	230x2000		
S-VALVE DIMENSION	83,09 l		
NUMBERS OF STROKES PER MIN.	27	30	37
HOPPER CAPACITY	600 l (158,5 gal)		
OUTPUT OPENING	178 mm (7")		

* Rod side feeding

PLACING BOOM specification

MAX. HEIGHT FROM GROUND	35,3 m (115'9")
MAX. HORIZONTAL REACH	31,3 m (102'8")
MAX. DOWNWARD REACH	-24,7 m (81')
NUMBER OF SECTIONS	5
MINIMUM HEIGHT OPENING	6,75 m (22'1")
FLEXIBLE TERMINAL HOSE	Standard
TURRET ROTATION ANGLE	370°
SECTION OPENING ANGLES	90° - 180° - 240° - 180° - 260°
OPENING SYSTEM	"Multi Z"
FRONT OUTRIGGERS	Telescopic single "X"
REAR OUTRIGGERS	Horizontal
FRONT OPENING	6,30 m (20'8")
REAR OPENING	6,00 m (19'8")

MAIN FEATURES

PUMPING GROUP

- Pumping unit SCL whit open hydraulic circuit. Efficiency and simple maintenance.
- Concrete S-valve made by anti-wear fusion material.
- Pumping unit with automatic centralized lubrication system.
- Automatic oil lubrication system for pumping pistons.
- Automatic wear compensation system between wear plate and cutting ring. High wear resistance with carbide insert and maximum pumping efficiency.
- Chrome-lined concrete cylinders at high resistance.
- Hydraulic pumps with variable displacement and constant capacity adjuster.
- Gear hydraulic pumps for services purpose.
- Conveying chamber made of steel with high wear resistance.
- Remote concrete flow rate regulation, start and emergency stop control.
- Large capacity concrete hopper made by antiwear steel. Optimal shape designed to avoid concrete stagnating.
- Mixer shaft with screwed blades made in anti-wear steel.

PLACING BOOM & STABILIZATION

- Placing boom 5 sections, folding type "Z", pipeline diameter 125 mm (5"), ideal for movements in limited spaces. Top quality steel, made by welded box section, noodles obtained directly from the cores.
- Pump made by high-yield tensile strength steel, FEM designed.
- Boom hydraulic pump with fix displacement.
- Hinge points made with double support pin and "long-life" lubrication.
- Hydraulic cylinders made by high yield strength steels.
- "Overcenter" valves fixed directly on the oil inlet: allow smooth operation boom and high reliability.
- Hydraulic proportional distributor.
- Boom rotation managed by safety limit switch with hydraulic brake system and valves "anti-shock".
- Front outriggers "X" open; rear outriggers "horizontal" open. Separated operation controls on both side of the equipment. Position held by hydraulic check valves.

ASSEMBLY on vehicle

3-axles chassis

Wheelbase 3.900 – 4.200 mm

Total weight

≤ 26 t (57320 lb)

STANDARD EQUIPMENT

- Nr. 2 proportional radio remote controls provided with double speed in boom moving, automatic free frequency research, manipulators with 8 positions and delivery capacity converter.
- Safety block-out at the opening of tank outlet hatch and hopper grid.
- Washing nozzle.
- Set of manometers and mini flexible hoses to supervise the pressure.
- Multi-level centrifugal water pump 65 l/min, 25 bar.
- Electric vibrator on hopper grid remote controlled.
- Water tank capacity 650 liters (172 gallons).
- Heat exchanger with hydraulically controlled fan.
- Light projector on hopper.
- Level readers for stabilization control.
- Metal basket for accessories on the hopper side.
- Hard plastic plates for outrigger support and housing with safety lock.
- Switchboard fully protected on the right side.
- Stepladder to access the footboard for inspection and maintenance.
- Tool kit for cleaning and maintenance.
- Rubber end hose mounted on the boom.
- Spare parts manual & maintenance manual.

ACCESSORIES ON REQUEST

- Concrete double wall pipeline with tempered core.
- Additional light projector on hopper.
- Pipeline kit for pumping on the ground.
- Multi-level water pump.
- Kit lights and claxon on the boom.
- Pipes holder.
- Automatic release of terminal hose.
- High pressure water pump with fan-shaped hose nozzle.
- Atomizer 25 liters stainless.
- Compressor for pipeline cleaning.
- Aluminum cover for hopper.
- Kit "Stop-flow".
- Kit "PROfessional".



SERMAC SRL
Via A. Manzoni, 146
20811 Cesano Maderno (MB), Italy
Phone +39 0362 364320
Fax +39 0362 1632000
www.sermacpumps.com
info@sermacpumps.com

COMPANY WITH
QUALITY SYSTEM
CERTIFIED BY DNV GL
= ISO 9001 =



REPRESENTED BY: