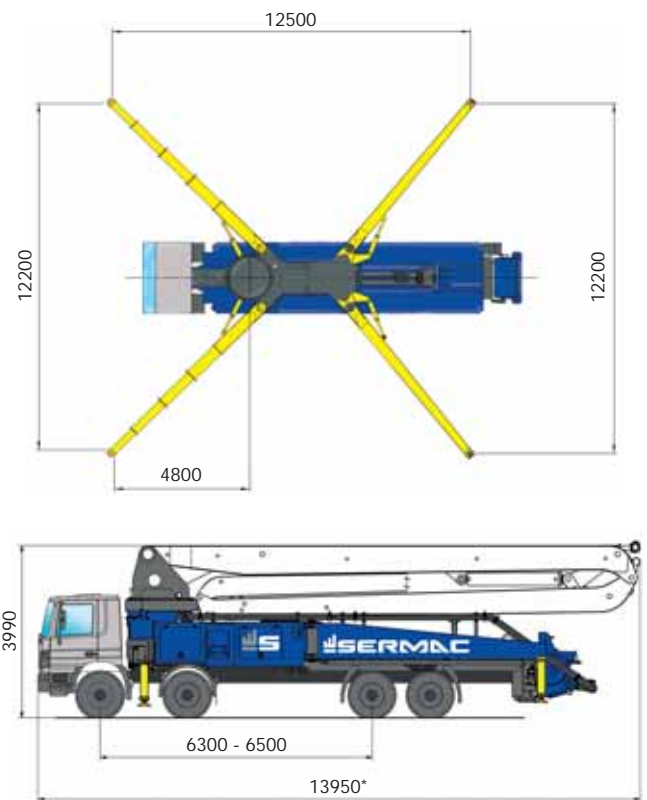
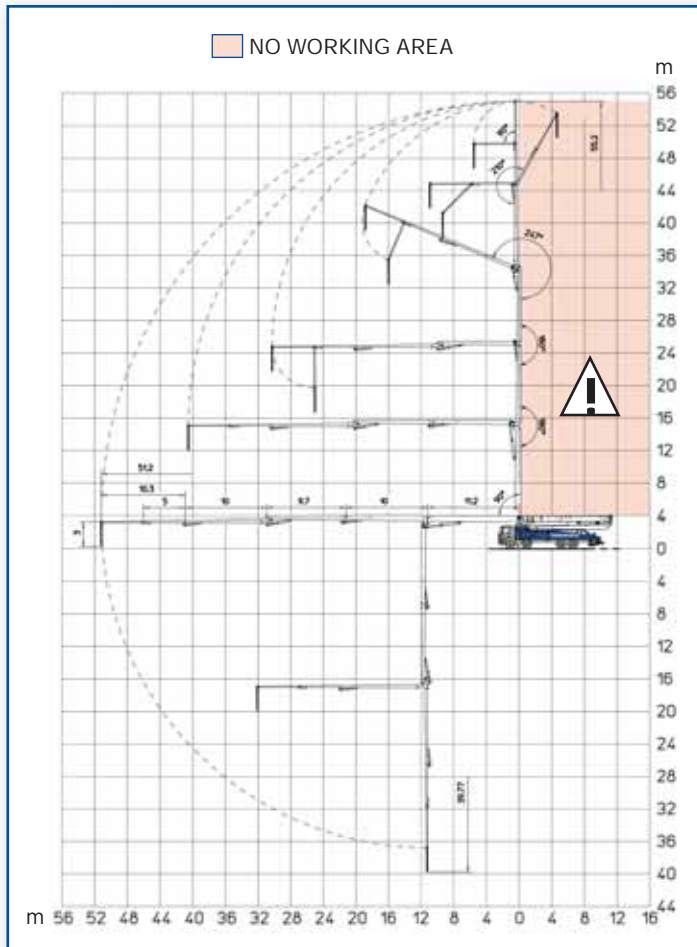




## ADVANTAGES

- Concrete pump created by - R&D SERMAC DESIGN - to reach maximum performance.
- Concrete pump made, assembled and tested in Italy (Milan).
- High precision and great versatility of boom movement thanks to boom 6RZ65.
- Italian and German main components, Swedish steel.
- Frame pump designed for high torsion rigidity with outriggers integrated.
- Optimal loads distribution, precise assembly on standard 5 (or 6) axles chassis.
- Total length equipment < 15,5 meters (50'10").
- Total weight equipment ≤ 52 tons (114640 lb).



\*Dimension varying according to the truck assembly

## PUMPING UNIT specifications

MODEL	SCL150AHP
CONCRETE OUTPUT (MAX)*	149 m <sup>3</sup> /h (195 cy/h)
CONCRETE PRESSURE (MAX)*	76 bar 1102 p.s.i.
PUMPING CYLINDERS (Ø X STROKE)	230x2000 mm
NUMBERS OF STROKES PER MIN.	30
HOPPER CAPACITY	600 l (158,5 gal)
OUTPUT OPENING	178 mm (7")

\* Rod side feeding

## PLACING BOOM specifications

MAX. HEIGHT FROM GROUND	64.35 m (211'1")
MAX. HORIZONTAL REACH	60.35 m (197'11")
MAX. DOWNWARD REACH	-50 m (-164')
NUMBER OF SECTIONS	6
PIPELINE DIAMETER	125 mm (5")
FLEXIBLE TERMINAL HOSE	Standard
TURRET ROTATION ANGLE	370°
SECTION OPENING ANGLES	90° - 180° - 180° 225° - 210° - 90°
OPENING SYSTEM	"RZ"
FRONT OUTRIGGERS	Telescopic quadruple "X"
REAR OUTRIGGERS	Swing-out
FRONT/LATERAL OPENING	12.20 m (39'9")
REAR OPENING	12.20 m (39'9")

## MAIN FEATURES

### PUMPING GROUP

- Pumping unit SCL with open hydraulic circuit. Efficiency and simple maintenance.
- Concrete S-valve made of anti-wear fusion material.
- Pumping unit with automatic centralized lubrication system.
- Automatic oil lubrication system for pumping pistons.
- Automatic wear compensation system between wear plate and cutting ring. High wear resistance with carbide insert and maximum pumping efficiency.
- Chrome-lined concrete cylinders at high resistance.
- Hydraulic pumps with variable displacement and constant capacity adjuster.
- Gear hydraulic pumps for services purpose.
- Conveying chamber made of steel with high wear resistance.
- Remote concrete flow rate regulation, start and emergency stop control.
- Large capacity concrete hopper made of antiwear steel. Optimal shape designed to avoid concrete stagnating.
- Mixer shaft with screwed blades made of anti-wear steel.

### PLACING BOOM & STABILIZATION

- New placing boom 6 sections, folding type "RZ", pipeline diameter 125 mm (5"), high versatility of movement guaranteed by last 6<sup>th</sup> section. Top quality steel, made of welded box section, noodles obtained directly from the cores.
- Pump made of high-yield tensile strength steel, FEM designed.
- Boom hydraulic pump with variable displacement.
- Hinge points made with double support pin and "long-life" lubrication.
- Hydraulic cylinders made of high yield strength steels.
- "Overcenter" valves fixed directly on the oil inlet: allow smooth operation boom and high reliability.
- Hydraulic proportional distributor "load-sensing".
- Boom rotation managed by safety limit switch with hydraulic brake system and valves "anti-shock".
- Aluminum joints.
- Front outriggers "X" opening; rear outriggers "swing-out" opening. Separated operation controls on both side of the equipment. Position held by hydraulic check valves.

### ASSEMBLY on vehicle

5-axles chassis

Wheelbase 6,300 mm

Total weight

≤ 52 t (114640 lb)

## STANDARD EQUIPMENT

- Nr. 2 proportional radio remote controls provided with double speed in boom moving, automatic free frequency research, manipulators with 8 positions and delivery capacity converter.
- Safety block-out at the opening of tank outlet hatch and hopper grid.
- Washing nozzle.
- Set of manometers and mini flexible hoses to supervise the pressure.
- Membrane water pump 75 l/min, 30 bar.
- Electric vibrator on hopper grid remote controlled.
- Water tank capacity 900 liters (238 gallons).
- Heat exchanger with hydraulically controlled fan.
- Light projector on hopper.
- Level readers for stabilization control.
- Metal basket for accessories on the hopper side.
- Hard plastic plates for outrigger support & housing with safety lock.
- Switchboard fully protected on the right side.
- Stepladder to access the footboard for inspection and maintenance.
- Tool kit for cleaning and maintenance.
- Rubber end hose mounted on the boom.
- Spare parts manual & maintenance manual.

## ACCESSORIES ON REQUEST

- Concrete double wall pipeline with tempered core.
- Additional light projector on hopper.
- Multi-level water pump.
- Kit lights and claxon on the boom.
- Pipes holder.
- Automatic release of terminal hose.
- High pressure water pump with fan-shaped hose nozzle.
- Atomizer 25 liters stainless.
- Compressor for pipeline cleaning.
- Aluminum cover for hopper.
- Kit "Stop-flow".
- Kit "PROfessional".



**SERMAC SRL**

Via A. Manzoni, 146  
20811 Cesano Maderno (MB), Italy  
Phone +39 0362 364320  
Fax +39 0362 1632000  
www.sermacpumps.com  
info@sermacpumps.com

COMPANY WITH  
QUALITY SYSTEM  
CERTIFIED BY DNV GL  
= ISO 9001 =



REPRESENTED BY: